



# MultiPresenterOne

## 1.0

USER MANUAL

---

Present a PDF — or an online Canva presentation — like a slide deck. A dual-screen presenter view, live tools, NDI output and remote control, in one clean control-room app.



THREE SIXTY

© 2026 THREESIXTY.PT

# In this manual

#	Chapter	What you'll learn
1	<b>Introduction</b>	What MultiPresenterOne does and a tour of the window
2	<b>Installation &amp; First Run</b>	Installing on Windows, prerequisites, shortcuts
3	<b>Activation, Trial &amp; License</b>	Activating a key, the 5-minute trial, moving a license
4	<b>The Presenter Interface</b>	The toolbar, current/next stage and control bar
5	<b>Presenting a PDF</b>	Opening, navigating and jumping through a deck
6	<b>Presenting a Canva Link</b>	Loading an online deck and navigating it
7	<b>Live Presentation Tools</b>	Freeze, black, zoom-to-region, grid, annotation
8	<b>Audience Output &amp; Displays</b>	Fullscreen on the second screen, picking the monitor
9	<b>NDI Output</b>	Sending the live slide to your network as video
10	<b>Remote Control (HTTP &amp; OSC)</b>	Command reference for external controllers
11	<b>Settings Reference</b>	A quick tour of every Settings tab
12	<b>Shortcuts, Troubleshooting &amp; Support</b>	Quick reference, FAQ and how to get help

# 1 Introduction

MultiPresenterOne turns any PDF — or an online Canva presentation — into a proper, dual-screen slide show. Your laptop shows a **presenter view** (current slide, next slide, timer and controls) while the projector or second screen shows a clean **full-screen output** for the audience.

It's built for live use — conferences, classrooms, houses of worship, museums and AV control rooms — with large, legible controls and everything reachable without hunting through menus mid-show.

## Key features

- ▶ **PDF & Canva** — open a local PDF, or paste a Canva share link and present it the same way.
- ▶ **Dual-screen presenter view** — current + next slide, an on-air indicator, clock and elapsed timer.
- ▶ **Live tools** — freeze, black, zoom-to-region, a grid overview and on-slide annotation.
- ▶ **NDI® output** — send the live slide to your network as a video source, no extra software.
- ▶ **Remote control** — drive it from Bitfocus Companion or any controller over HTTP or OSC.
- ▶ **Self-contained** — native PDF rendering; no conversion, no upload, no signup.

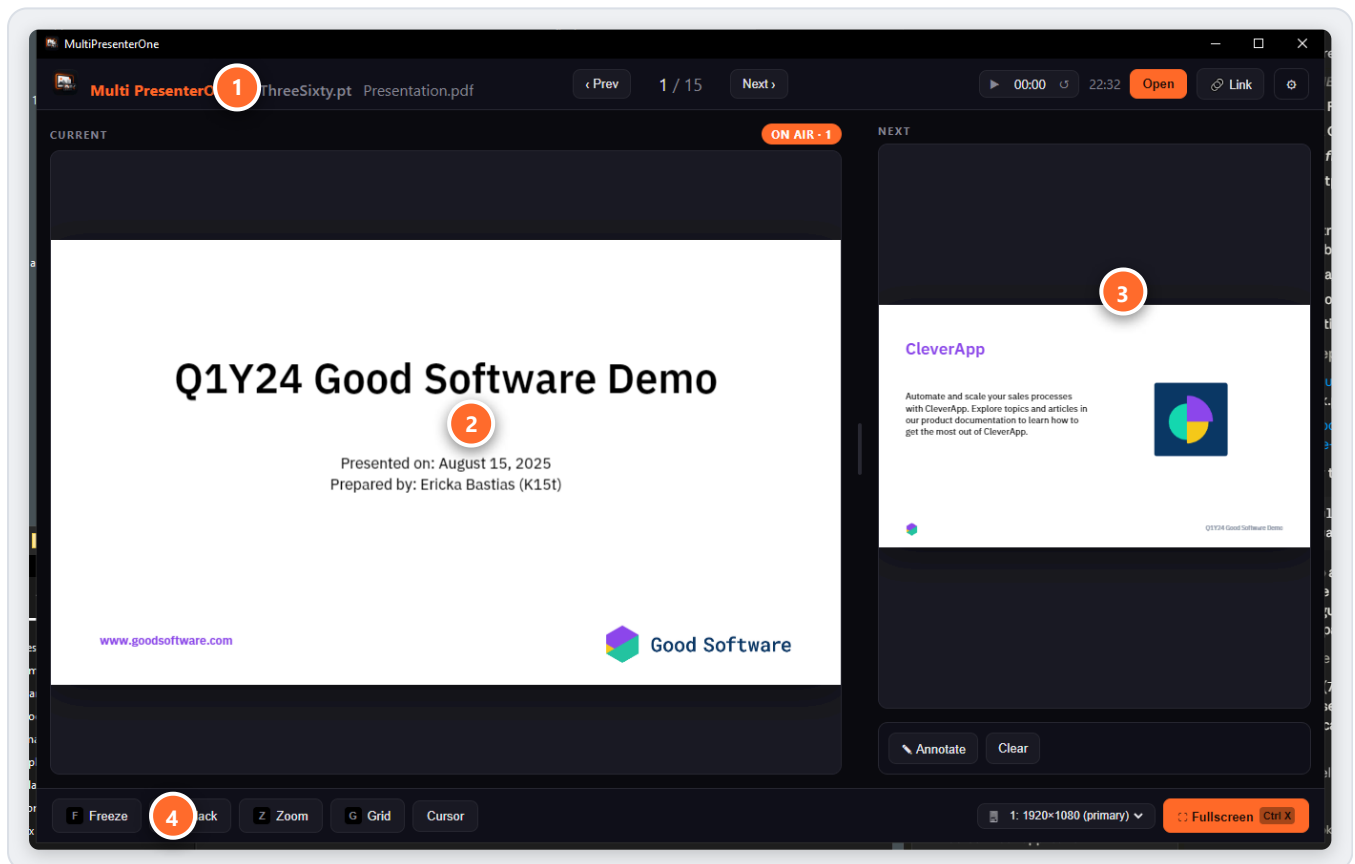


Figure 1.1 — The presenter window, presenting a PDF deck.

- 1 Toolbar** — branding, file name, Prev/Next, the slide counter, timer & clock, Open, Link and Settings.
- 2 CURRENT** — the slide you're working on; the *ON AIR* badge shows which slide the audience is seeing.

**3** **NEXT** — a live preview of the upcoming slide.

**4** **Control bar** — Freeze, Black, Zoom, Grid, Cursor, the display picker and Fullscreen.

## 2 Installation & First Run

MultiPresenterOne ships as a standard Windows installer. Everything it needs is bundled — you don't have to download anything else.

### System requirements

- **Operating system:** Windows 10 or Windows 11, 64-bit.
- **Displays:** a second screen (HDMI / DisplayPort / USB-C) for the audience output — optional but recommended.
- **Internet:** needed the first time you activate your license; afterwards the app runs offline.

### Installing

1. Run `MultiPresenterOne Setup 1.0.0.exe`.
2. If Windows shows a SmartScreen prompt, choose *More info* → *Run anyway* (published by Three Sixty).
3. Choose the install folder if you wish. Installation is per-machine, so administrator approval may be requested.
4. The required **Microsoft Visual C++ runtime** is installed automatically and silently if it's missing.
5. A **Desktop shortcut** and a **Start-menu** entry named *MultiPresenterOne* are created.

#### NDI IS BUILT IN

The NDI runtime ships inside the app, so you do *not* need to install NDI Tools to use NDI output. The bundled Visual C++ redistributable is only a safety net for clean machines and is skipped if already present.

## 3 Activation, Trial & License

MultiPresenterOne is licensed per computer. The first time you launch it, the activation window appears before the app opens.

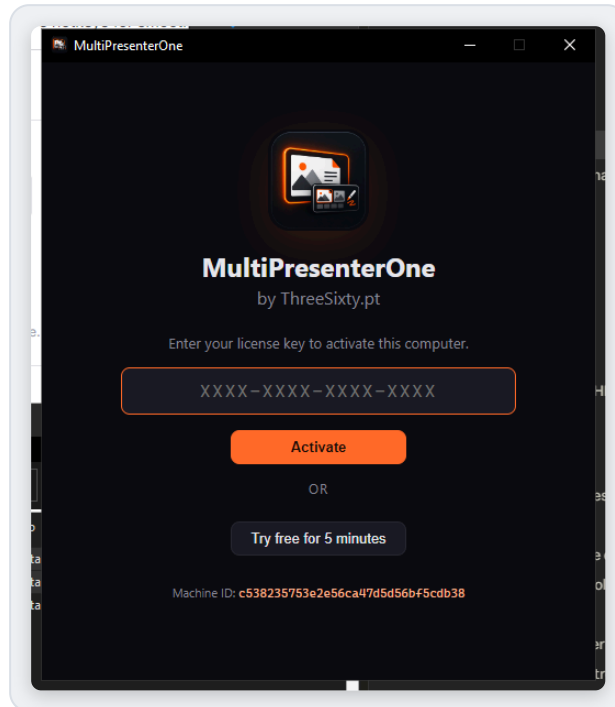


Figure 3.1 — The activation window: activate with a key, or start the 5-minute trial.

### Activating with a key

1. Type or paste your key into the field (format `XXXX-XXXX-XXXX-XXXX`).
2. Press **Activate** (or `Enter`). The key is validated online and bound to this computer's **Machine ID**.
3. On success the app opens to the presenter view.

### Try it first — the 5-minute trial

Click **Try free for 5 minutes** to run the full application without a key. The output carries a “MultiPresenterOne” watermark and a countdown appears in the toolbar; when it reaches zero the app closes automatically. The trial can be used once per computer — activate a key at any time to remove the limit and the watermark.

### Managing & moving your license

Open **Settings** → **License** to review status, who it's licensed to, expiry, the last online check and your Machine ID.

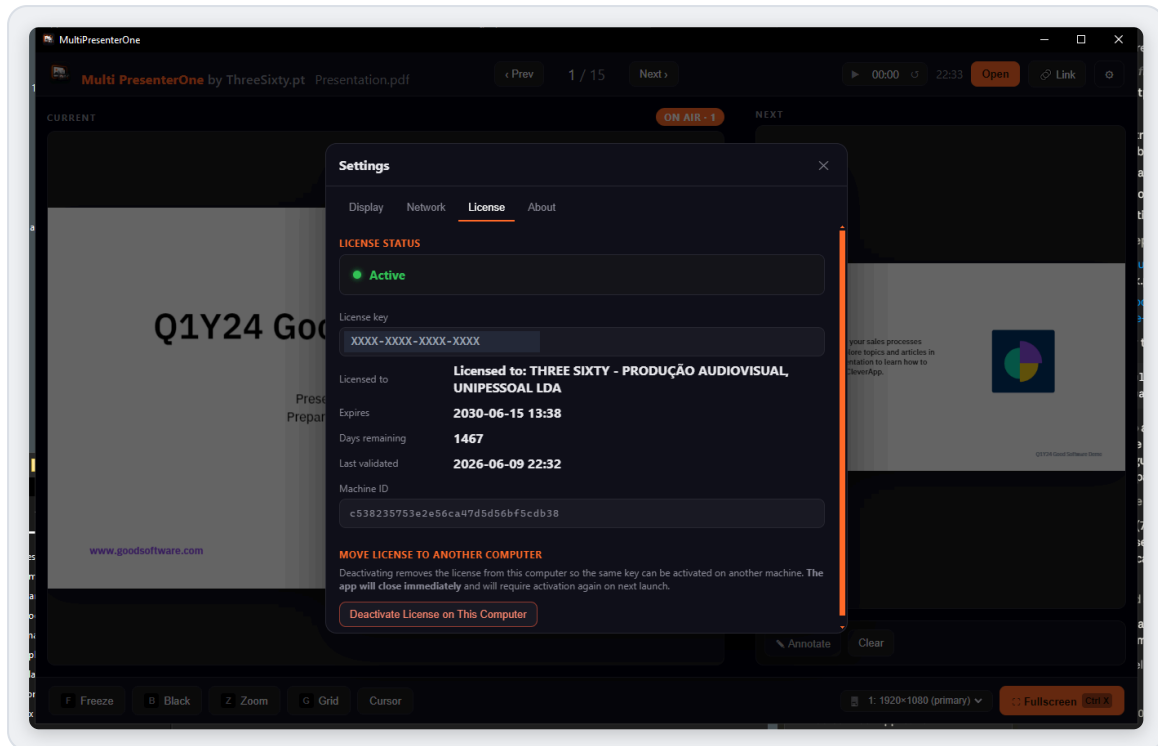


Figure 3.2 — Settings → License.

To move the license to another computer, click **Deactivate License on This Computer** and confirm. This releases the activation here and **closes the app immediately**; you can then activate the same key on the other machine.



#### BEFORE YOU DEACTIVATE

Deactivation closes MultiPresenterOne at once and it will ask for activation again on next launch — finish your presentation first.

## 4 The Presenter Interface

Once a deck is loaded, the presenter view fills your laptop screen. It has three zones: the **toolbar** across the top, the **stage** (CURRENT + NEXT) in the middle, and the **control bar** along the bottom.

### Toolbar

- **Prev / Next** and the slide counter (e.g. 1 / 15).
- **Timer** (elapsed) and a **clock**.
- **Open** — load a PDF.  **Link** — present a Canva / online link.
-  **Settings** — Display, Network, License and About.

### Stage

CURRENT	The slide you're working on. The <i>ON AIR</i> badge shows which slide the audience is seeing — they can differ while you're frozen or scrubbing ahead.
NEXT	A live preview of the upcoming slide, so you can prepare your delivery.
Divider	Drag the bar between CURRENT and NEXT to resize the panels; the width is remembered.

### Control bar

Freeze, Black, Zoom, Grid and Cursor on the left; the **display picker** and the orange **Fullscreen** button on the right (Chapters 7–8).

#### WORK IN THE DARK

Every action has a one-key shortcut (see Chapter 12), so you can run the whole show from the keyboard without looking away from the room.

## 5 Presenting a PDF

Open a PDF with **Open** (or press **O**), by dragging it onto the start screen, or remotely over the network (Chapter 10). PDFs are rendered natively — nothing is uploaded or converted.

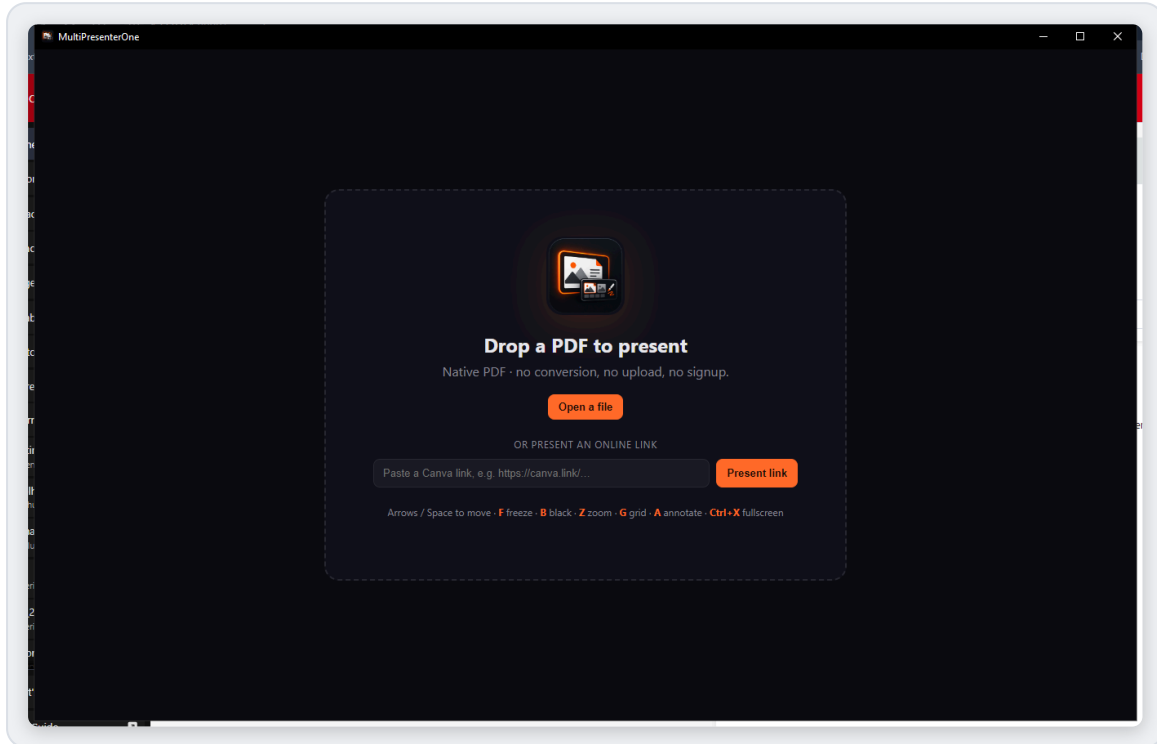


Figure 5.1 — The start screen: drop or open a PDF, or paste an online link.

### Navigating


Keys	Action
→ ↓ Space PageDn	Next slide
← ↑ PageUp	Previous slide
Home / End	First / last slide
G	Open the grid, then click any slide to jump there

The on-screen **Prev** / **Next** buttons do the same, and the NEXT panel always shows the upcoming page.


## 6 Presenting a Canva Link

MultiPresenterOne can present a Canva presentation straight from its share link — no export needed.

### Loading a link

1. On the start screen, paste the link (e.g. `https://canva.link/...`) into the online-link box and click **Present link**.
2. While presenting, use the  **Link** toolbar button to load a different link.

### How it behaves

- The deck opens on the output and in the CURRENT panel; the NEXT panel shows the following slide.
- The cookie banner and Canva's own toolbars are removed automatically, so only the slide shows.
- Navigate with **Next / Prev** (or click the current slide to advance), exactly like a PDF.
-  **Reload** (next to **Link**) restarts the deck from the first slide and re-syncs both screens.

#### GOOD TO KNOW

Because Canva is live web content, give it a second or two to load before the first slide appears. Freeze and Black work with Canva; Zoom, Grid and Annotation apply to PDFs only.

## 7 Live Presentation Tools

These act on the audience output while you stay in control on the presenter screen.

Tool	Key	What it does
Freeze	F	Holds the current slide on the output while you move ahead privately. Unfreeze jumps the audience to where you are.
Black	B	Cuts the output to solid black (and back) to draw attention back to you.
Zoom	Z	Zooms <i>the output only</i> into a region; drag the rectangle on the preview to choose what's magnified.
Grid	G	Shows every slide as thumbnails; click one to jump there (PDF).
Annotate	A	Draw on the slide (pen / highlighter); C clears the current slide (PDF).
Cursor	—	Shows or hides the mouse cursor on the audience output.

### Zoom — region pan

With Zoom on, the preview stays full-frame and shows an orange rectangle marking what the output is magnifying. Drag the rectangle (or click the slide) to pan the zoomed area in real time.

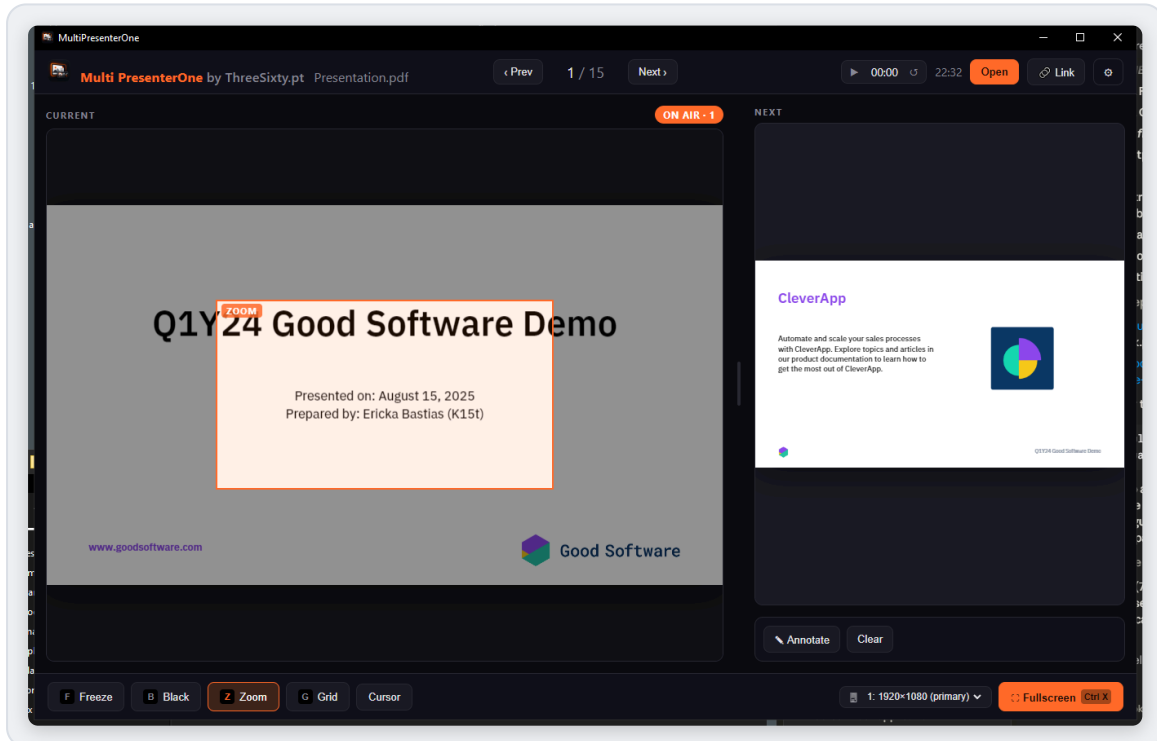


Figure 7.1 — Zoom: the output is magnified into the boxed region; drag it on the preview to move it.

# Grid — jump to any slide

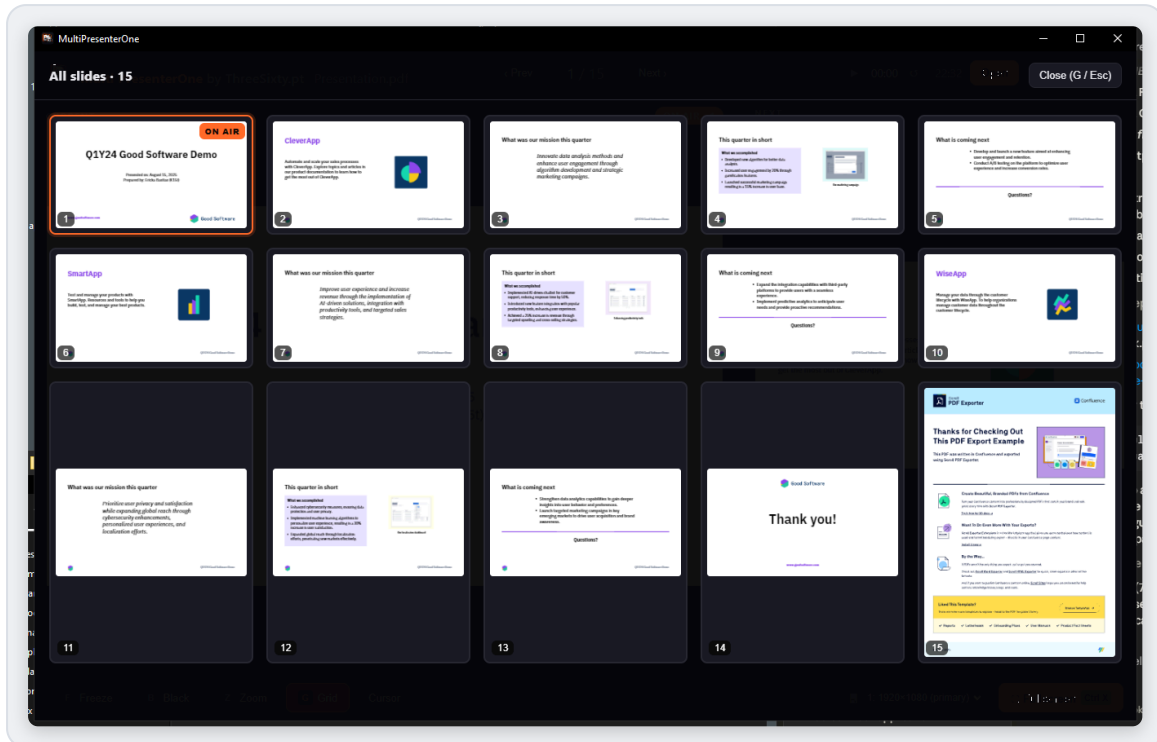


Figure 7.2 — Grid: every slide at a glance — the on-air slide is outlined in orange. Press **G** / **Esc** to close.

## 8 Audience Output & Displays

The audience output is created only when you ask for it — it doesn't clutter your screen until you're ready.

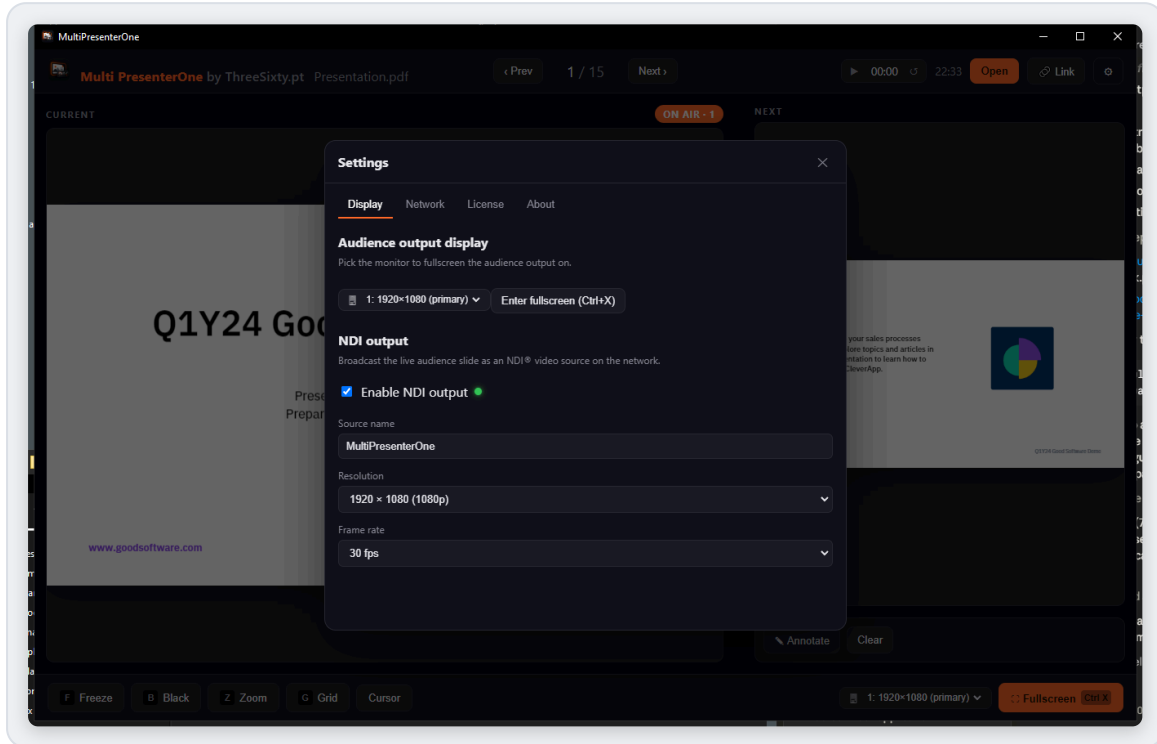


Figure 8.1 — Settings → Display: pick the output monitor, enter fullscreen, and configure NDI.

- Press **Ctrl** + **X** or click **Fullscreen** to open the output full-screen on the chosen display; press again to close it.
- Choose the target monitor with the **display picker** in the control bar (or in Settings → Display).
- The output is clean — just the slide (or black). Use **Cursor** if you need the pointer visible.

### EXTEND, DON'T DUPLICATE

Set Windows display mode to **Extend** (not Duplicate) so the presenter view and the audience output can be different.

## 9 NDI Output

NDI® lets you send the live audience slide to other software on your network (vMix, OBS with the NDI plugin, TriCaster, etc.) as a video source — ideal for streaming or recording without a capture card.

1. Open **Settings** → **Display**.
2. Tick **Enable NDI output** — the status dot turns green when broadcasting.
3. Set the **Source name** (how it appears on the network), the **Resolution** (720p–4K) and the **Frame rate** (24–60 fps).

The NDI source carries the same image as the audience output, whether or not the fullscreen window is open.

### PDF VS CANVA

NDI output is designed for PDF presentations. Canva (live web) output to NDI is best-effort and may not appear in receivers.

## 10 Remote Control (HTTP & OSC)

Drive MultiPresenterOne from Bitfocus Companion, a Stream Deck, a show controller or any device on the same network — over HTTP or OSC. Both are off by default and enabled in Settings.

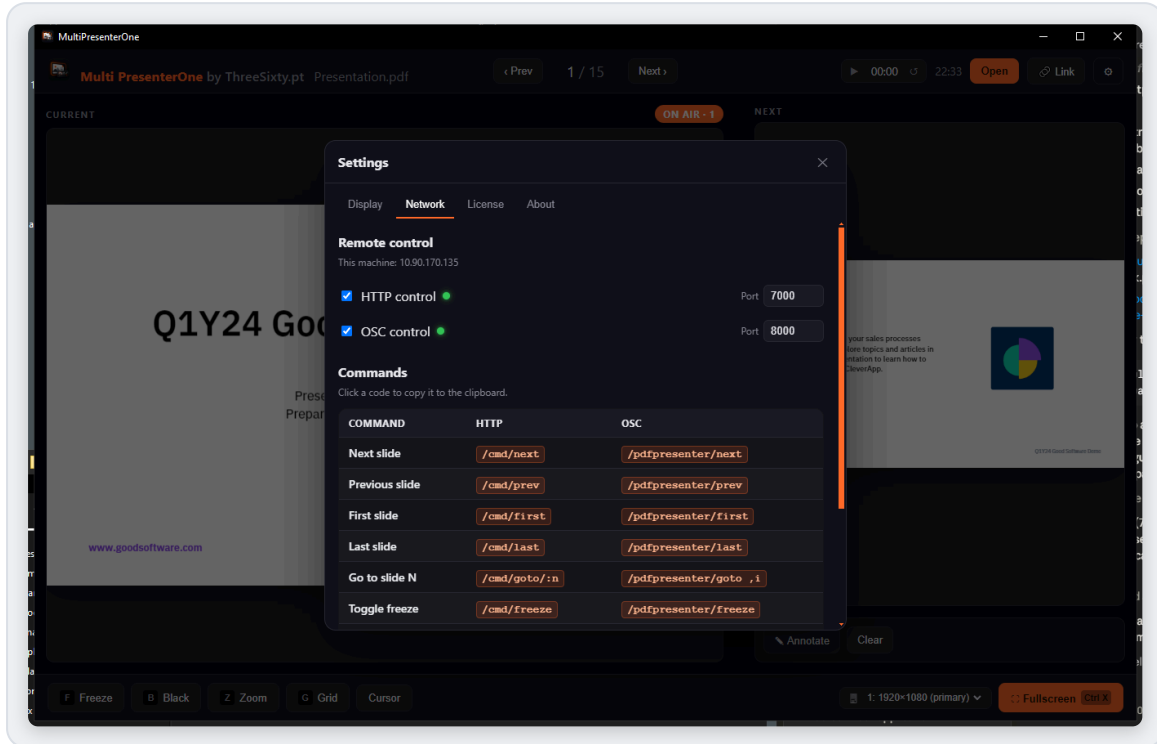


Figure 10.1 — Settings → Network: enable HTTP/OSC, set ports, and copy command codes with one click.

1. Open **Settings** → **Network** and tick **HTTP control** and/or **OSC control** (the dot turns green when listening).
2. Note the machine address shown and the ports (HTTP `7000`, OSC `8000` by default).
3. Send the commands below. **Click any code in the table to copy it** to the clipboard.

### Command reference

HTTP: send a request to `http://<machine>:7000<path>`. OSC: send to UDP port 8000.

Action	HTTP path	OSC address
Next slide	<code>/cmd/next</code>	<code>/pdfpresenter/next</code>
Previous slide	<code>/cmd/prev</code>	<code>/pdfpresenter/prev</code>
First slide	<code>/cmd/first</code>	<code>/pdfpresenter/first</code>
Last slide	<code>/cmd/last</code>	<code>/pdfpresenter/last</code>
Go to slide N	<code>/cmd/goto/&lt;n&gt;</code>	<code>/pdfpresenter/goto</code> + int
Toggle freeze	<code>/cmd/freeze</code>	<code>/pdfpresenter/freeze</code>
Toggle black	<code>/cmd/black</code>	<code>/pdfpresenter/black</code>
Toggle zoom	<code>/cmd/zoom</code>	<code>/pdfpresenter/zoom</code>
Toggle grid	<code>/cmd/grid</code>	<code>/pdfpresenter/grid</code>
Toggle fullscreen	<code>/cmd/fullscreen</code>	<code>/pdfpresenter/fullscreen</code>
Clear annotations	<code>/cmd/clear</code>	<code>/pdfpresenter/clear</code>

Example `http://192.168.1.50:7000/cmd/next`

# 11 Settings Reference

Open Settings with the  button in the toolbar. It has four tabs.

Tab	What's there
<b>Display</b>	The audience-output monitor picker and fullscreen button, plus all NDI options (enable, source name, resolution, frame rate).
<b>Network</b>	HTTP and OSC remote control — enable, ports, this machine's address, and the click-to-copy command table.
<b>License</b>	License status, who it's licensed to, expiry, last validated, your Machine ID, and the deactivate (move) button.
<b>About</b>	Version and a support link.

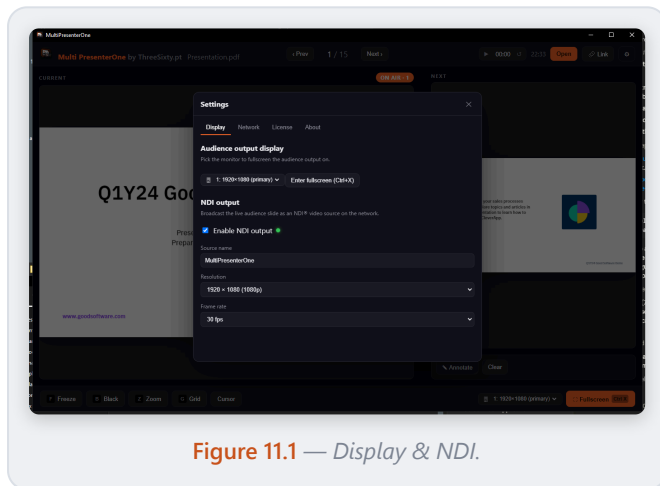


Figure 11.1 — Display & NDI.

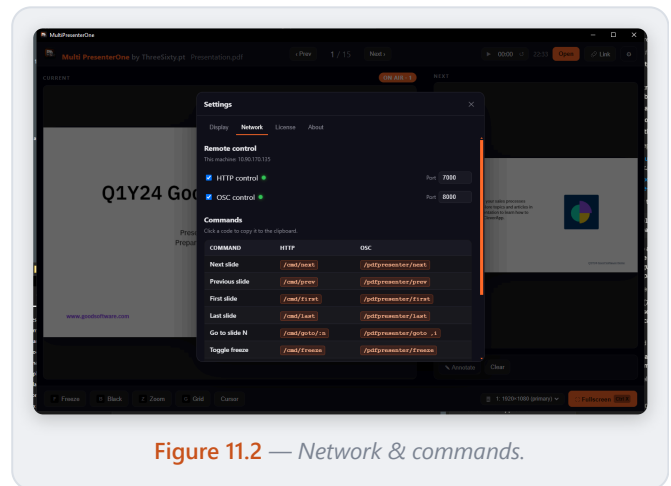


Figure 11.2 — Network & commands.

## 12 Shortcuts, Troubleshooting & Support

### Keyboard shortcuts

Keys	Action
→ ↓ Space PageDn	Next slide
← ↑ PageUp	Previous slide
Home / End	First / last slide (PDF)
F B	Freeze · Black
Z G A C	Zoom · Grid · Annotate · Clear (PDF)
O	Open a PDF
Ctrl + X	Enter / exit audience fullscreen
Esc	Close grid / exit zoom / clear black / stop annotating

### Troubleshooting & FAQ

#### The output doesn't appear on the projector

Set Windows displays to **Extend** (not Duplicate), pick the right monitor in the display picker, then press **Ctrl + X**.

#### Activation fails

Check your internet connection and that the key is typed correctly — the exact server message is shown under the field. Your Machine ID is on the activation screen for support.

#### A Canva deck won't advance

Wait for it to finish loading, then use Next/Prev. Use **⌘ Reload** to restart from slide 1 and re-sync both screens.

#### NDI source isn't visible

Confirm **Enable NDI output** shows a green dot and the receiver is on the same network. NDI is intended for PDF output.

#### Remote commands are ignored

Confirm HTTP/OSC is enabled (green dot), that you're using the address and port shown, and that a firewall isn't blocking the port.

#### The app closed by itself

If you were on the free trial, the 5 minutes elapsed. Activate a license to continue.

## Support

For help, licensing or feedback, contact [support@threesixty.pt](mailto:support@threesixty.pt).

---

MultiPresenterOne 1.0 · © 2026 ThreeSixty.pt · [threesixty.pt](https://threesixty.pt)

NDI® is a registered trademark of Vizrt Group. Canva is a trademark of Canva Pty Ltd; MultiPresenterOne is not affiliated with Canva.